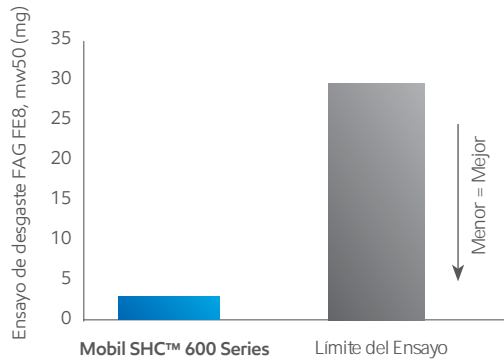


Mobil SHC™ 600 Series

3U HLLHVVHHUPLHV

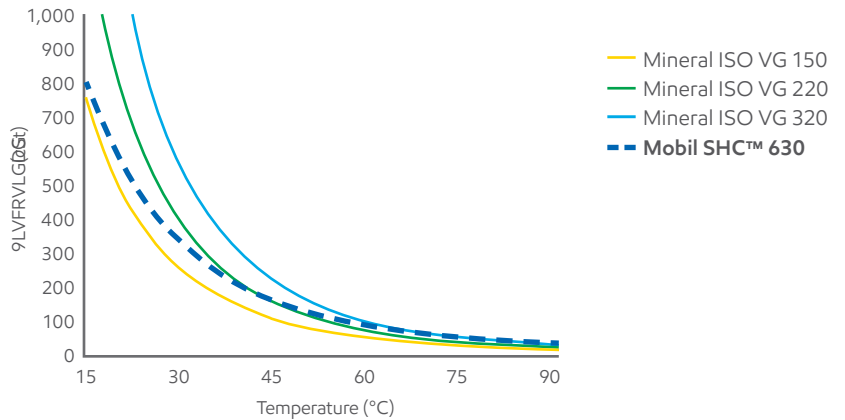
En el ensayo FAG FE8, se demuestra como los lubricantes Mobil SHC 600 Series protegen los rodamientos en condiciones operativas muy severas.



5 LLLHSUV

VEULHV0EL66HULHVSHUPLHUHLU
 HPHUHUHHUHLVHHVULVVVV
 OEL6,629SHHUUHPSUV
 EULHVPLHUHV,629
 UHLHPSHMLHPHPLH
 UVLHHLHUL
 EMHPSHUU0EL6SUHVH
 LVVLVPLLEULH,629
 HLLVUUTHV.LHHU
 HPSHUUVHHV0EL6HH
 LVVLVPLLEULHPLHU,629
 SUHLHHLPHHV HHPHVULVH
 UHU

9LVVL7HPSHUU

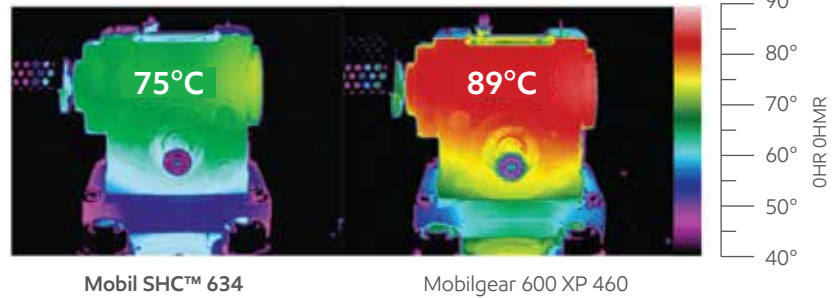


14°C

Mobil SHC 634 reduce la temperatura de operación aproximadamente 14 °C, en comparación con Mobilgear 600 XP 460

(ILFLHFLDHH LFD

DVVLXLHHVHPRDI@DVPXHVDFRPR0RELO6
 HGXFHDSRLPDGDPHHDHPSHDXDGH
 DEDMRHVSHFRGH0RELOHD3



Industrial Lubricants



Advancing Productivity™

6HXLGDG

DHGXFLLGHODVRSDFLRHV
 GHPDHLPLHRDDYVGH
 XLFHPRHGRHORVLHYDORV
 GHFDPELRHGXFHODHSRVLFL
 GHORVRSDFLRV
 LFHPHDGRVXVHXLGDG

3R HFFLGHOPHGLRDPELHH

OEL66HULHVSHHUHLU
 HVPHHULHPVH
 VUHVLVHHUUVUHV
 SHULHVPHPLPLH

3ULL

ULVVLPLHLV
 SUEHPVLSUVV
 EULHV0EL6
 SHHLUHPHU
 SULL

HLLHUHLLVHUHPLHHUHLPLHPSULHVPHUHVHPLVAVLWVHUHV
 6SHUPLHUHLUHHPHHLKVPSELELHUBHUHVHULVHVHHLU
 U

UJHPHLLHUHSHHSHUHLVSHUUVUHV

9LVLSVPRRYHOXEHVSDDGHVFXELFRPRORVOXELFDV0RELOSXHGHHGXFLHOLPSPDFRPHGLRDPELHODRVEHHLFLRVHDOHVGHSHGHGHOSRGXFR

VHOHFFLRDGRDODSOLFDFLDDVFRGLFLRHVGHRSDFL

K7RGRVORVGHIFRVIHVHYDGRVVDKELFDV683RELEGDODHSRGXFFLVLDXRLDF17RGDVODVPDFVXLOLDGDVHHOSHVVHVRPDFDVRPDFV

HLVDGDVGH0RELORSRDLRRGHXDGHVXVXEVLLGLDLVXLOLDGDVSRVVDKELFDV683XDGHVXVXEVLLGLDLVDMRDLFFLD

**PR RYHOHV
 OREDØRELOFRP**